

South Bay Consortium for Adult Education

Serving over 30,000 adult education students in Santa Clara County

Public Meeting

January 29, 2016

Santa Clara Adult Education

Expenditure Plan

*Need Indicators
Adult Population
Employment
Immigration
Educational Attainment
Adult Literacy

Stabilizes Current K12 Providers

Better Coverage Via Consortia

Funding for Accountability

2015-16 Budget
\$525M

~\$337 M to Stabilize
K-12 providers

~\$163M* for
Consortia of Providers

\$25M for New
Accountability and
Assessment

K-12 Adult Schools
County Offices Education

Community Colleges
K-12 Adult Programs
County Offices Education

State Infrastructure
CCCCO and CDE

Metrics of Need in SBCAE Region

	SJECCD	WVMCCD
Not HS Grad	111,972	23,800
HS Grad	106,026	38,756
Some College	120,209	56,662
Total Unemployed	39,282	13,673
Pop 18+	652,759	339,985
Poverty	38,699	22,362
Illiteracy	83,142	18,382
ESL	104,613	25,593
7th Grade Education	49,671	8,355

Of a million adults in the region, 12% need ESL, 10% are pre-literate, 24% have below basic English literacy*, 12% do not have a high school diploma and 5% have less than a seventh grade education.

Source – American Community Survey (Census - 2014) Source – National Assessment of Adult Literacy (2003).

\$500 Million to 71 Consortia in all regions of the state

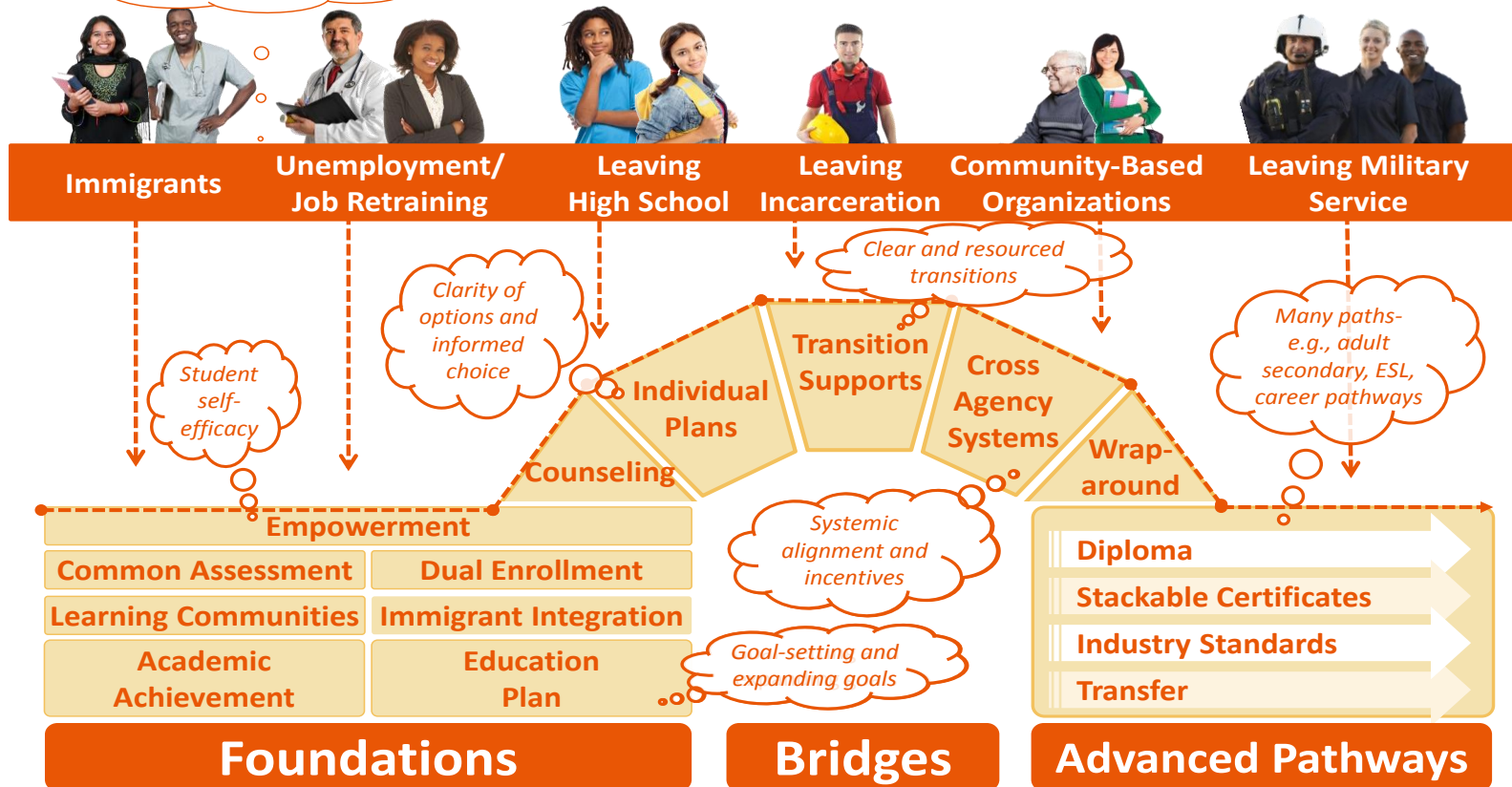
\$16,419,936 to SBCAE

(**\$11,842,004** Maintenance of Effort
for SBCAE Adult Schools)

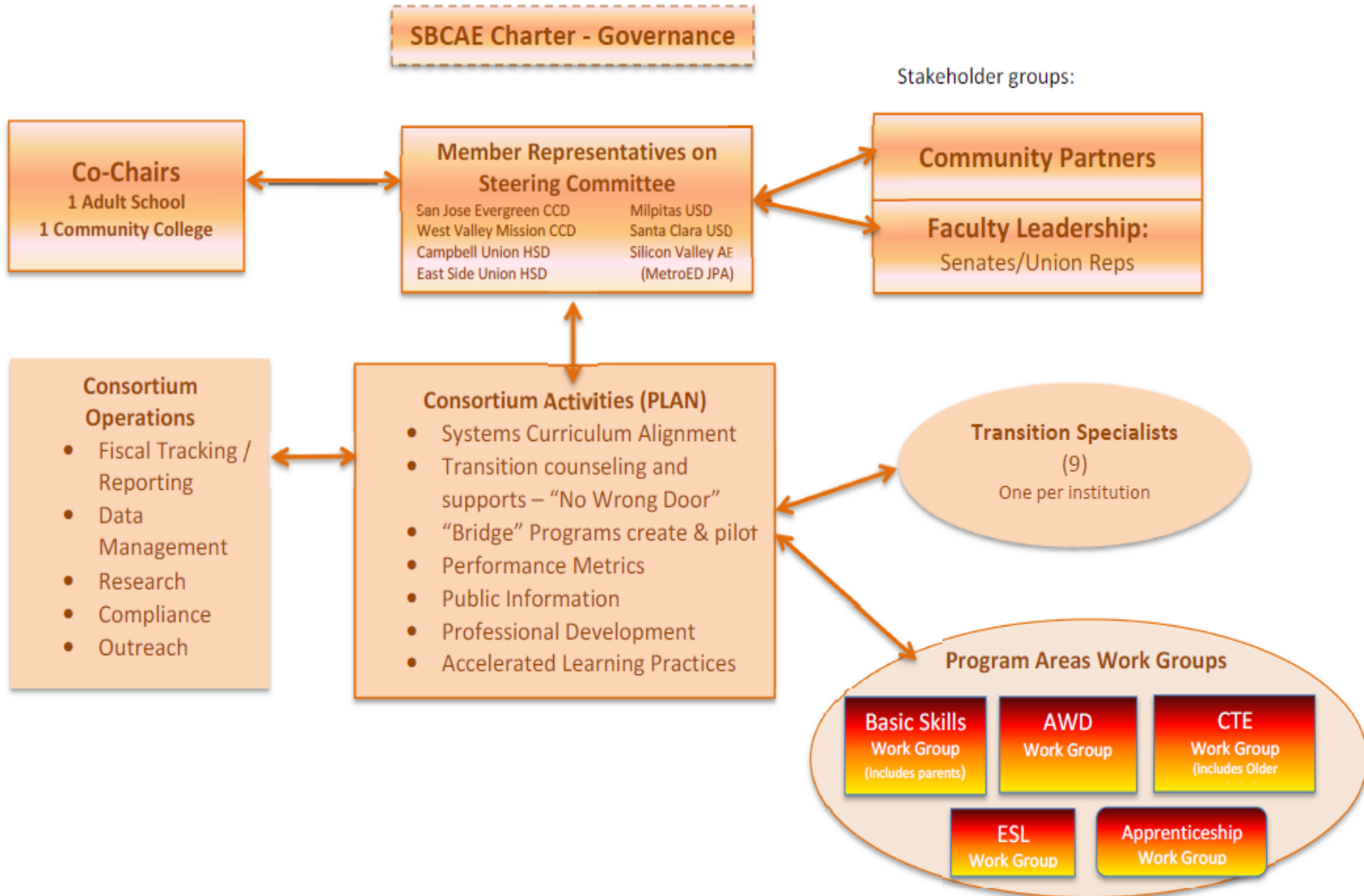
(**\$4,575,932** to SBCAE Consortium
based on demographics of need)

Emerging Model – Universal pathways linking Adult Education and Community Colleges

“No Wrong Door” – Multiple points of entry to the path to a better career



Organization Chart



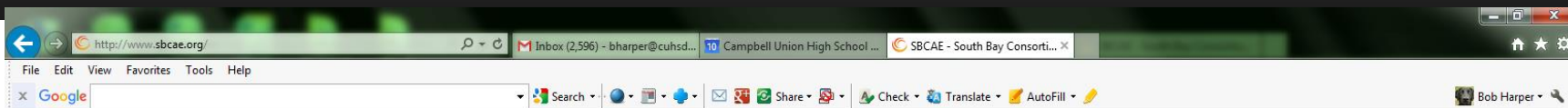
Decisions that require public meetings:

- Establish the annual activities funding distribution schedule,
- Make amendments to the Regional Plan or the annual activities and funding distribution schedule,
- Receive formal reports on implementation in order to review and certify the deliverables as required by the state.

Effectiveness Measures

In AB104, section 40, subsection 84920, the budget language states, “....the Chancellor and the Superintendent shall identify common measures for determining the effectiveness of members of each consortium in meeting the educational needs of adults”. The measures listed in the budget language include (but are not limited to) the following:

- (1) How many adults are served by members of the consortium.**
- (2) How many adults served by members of the consortium have demonstrated the following:**
 - (A) Improved literacy skills.**
 - (B) Completion of high school diplomas or their recognized equivalents.**
 - (C) Completion of postsecondary certificates, degrees, or training programs.**
 - (D) Placement into jobs.**
 - (E) Improved wages.**



South Bay Consortium for Adult Education
Serving over 30,000 adult education students in Santa Clara County

Home	Formal Meetings	Regional Plan	Annual Plan	AB86 & AB104	Community Partners	SBCAE Charter
English as a Second Language	Career Technical Education	Adult Basic & Secondary Education	Adults with Disabilities	Apprenticeships	Members	Contact Us



*College and adult school faculty
working together for our students*

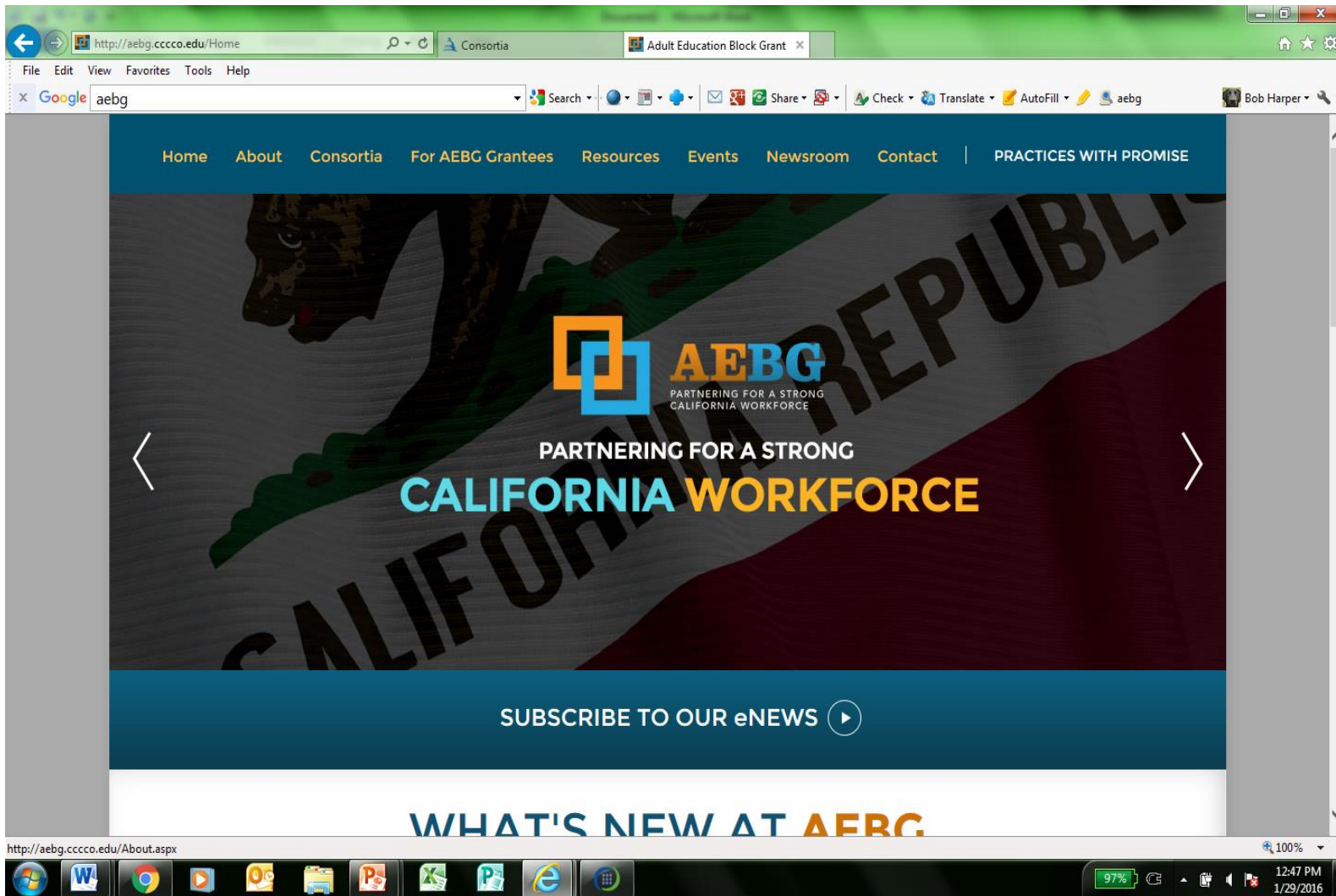
Welcome

The South Bay Consortium for Adult Education is a collaboration of four colleges and five adult

Calendar

Friday, November 13, 1:00-4:00pm

Faculty Workgroup



The screenshot shows a web browser window displaying the homepage of the Adult Education Block Grant (AEBG) website. The browser's address bar shows the URL <http://aebg.cccco.edu/Home>. The website features a dark blue header with navigation links: Home, About, Consortia, For AEBG Grantees, Resources, Events, Newsroom, and Contact. A secondary link, PRACTICES WITH PROMISE, is located on the right side of the header. The main content area is dominated by a large banner with a background image of the California state flag. The banner includes the AEBG logo and the text "PARTNERING FOR A STRONG CALIFORNIA WORKFORCE". Below the banner, there is a blue button that says "SUBSCRIBE TO OUR eNEWS" with a play icon. At the bottom of the page, the text "WHAT'S NEW AT AEBG" is visible. The browser's taskbar at the bottom shows various application icons, including Windows, Word, Chrome, and others, along with the system clock indicating 12:47 PM on 1/29/2016.

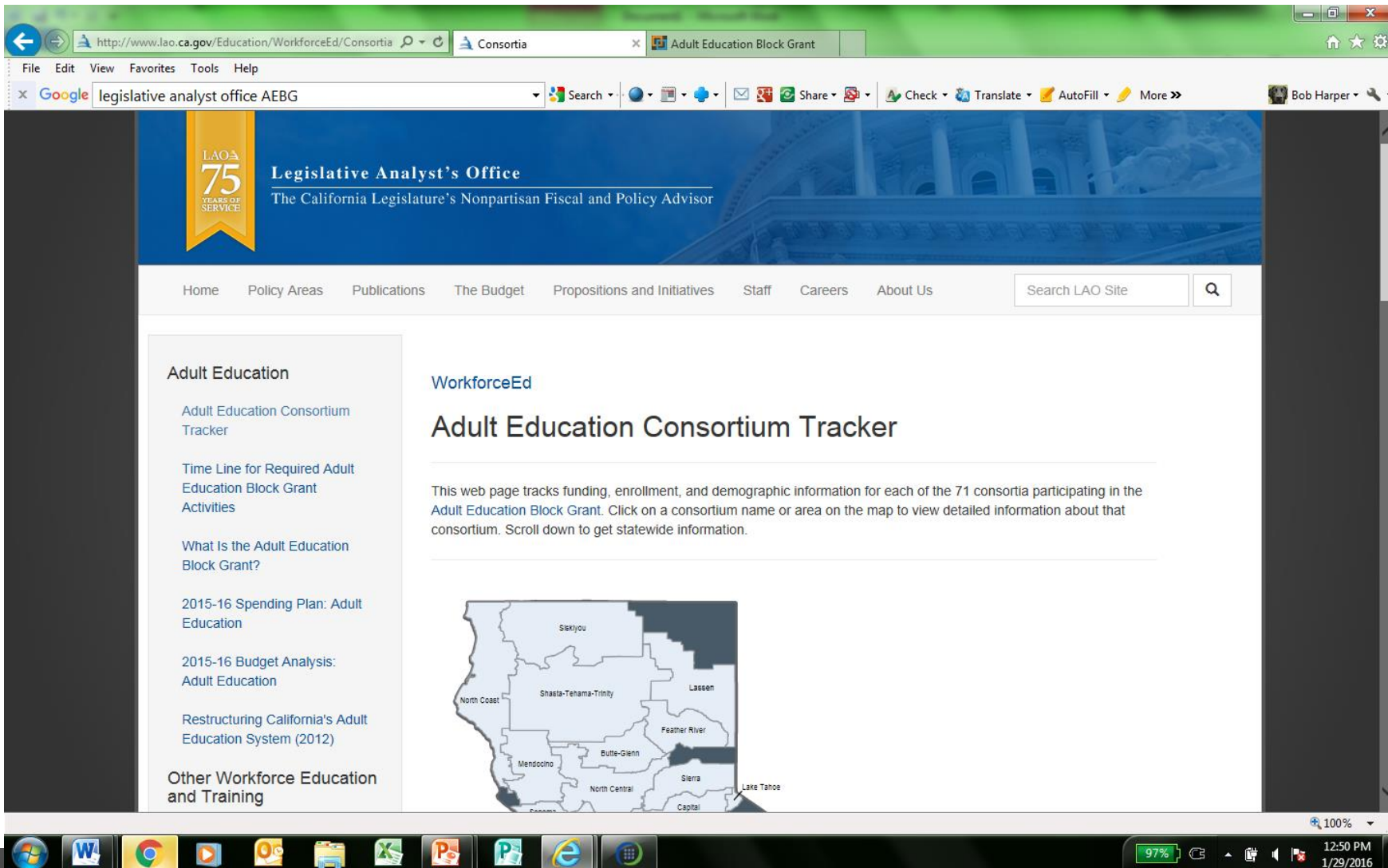
Home About Consortia For AEBG Grantees Resources Events Newsroom Contact | PRACTICES WITH PROMISE

AEBG
PARTNERING FOR A STRONG
CALIFORNIA WORKFORCE

PARTNERING FOR A STRONG
CALIFORNIA WORKFORCE

SUBSCRIBE TO OUR eNEWS

WHAT'S NEW AT AEBG



The screenshot shows a web browser window with the URL <http://www.lao.ca.gov/Education/WorkforceEd/Consortia>. The browser's address bar and tabs are visible, along with various extension icons. The website header features the LAOA 75 Years of Service logo and the title "Legislative Analyst's Office - The California Legislature's Nonpartisan Fiscal and Policy Advisor". A navigation menu includes links for Home, Policy Areas, Publications, The Budget, Propositions and Initiatives, Staff, Careers, and About Us, along with a search bar labeled "Search LAO Site".

The main content area is titled "Adult Education" and "WorkforceEd". The primary heading is "Adult Education Consortium Tracker". Below this heading, a paragraph states: "This web page tracks funding, enrollment, and demographic information for each of the 71 consortia participating in the Adult Education Block Grant. Click on a consortium name or area on the map to view detailed information about that consortium. Scroll down to get statewide information."

To the left of the map, a sidebar lists several links: "Adult Education Consortium Tracker", "Time Line for Required Adult Education Block Grant Activities", "What Is the Adult Education Block Grant?", "2015-16 Spending Plan: Adult Education", "2015-16 Budget Analysis: Adult Education", "Restructuring California's Adult Education System (2012)", and "Other Workforce Education and Training".

The map displays various California regions, including Siskiyou, Shasta-Tehama-Trinity, Lassen, Feather River, Butte-Glenn, Mendocino, North Central, Sierra, Capital, North Coast, and Lake Tahoe. The browser's taskbar at the bottom shows several open applications and the system clock indicating 12:50 PM on 1/29/2016.